



PROPERTY DESCRIPTION

Living rooms	Bedrooms	Bathrooms	Car Park	Area
				TBC sq ft

Offered to the market for the very first time, be the first occupier of this stunning one bedroom apartment offering views onto the River Thames. This spacious apartment offers fantastic living accommodation throughout and forms part of the highly prestigious Royal Wharf development which will offer a village esq style living within easy commute of Canary Wharf, the City and Stratford.

The development is located between Pontoon & West Silvertown DLR stations with frequent trains a to Bank DLR station and Canning Town. London City Airport and Stratford Westfield Shopping Centre.



TRANSPORT LINKS & JOURNEY TIMES

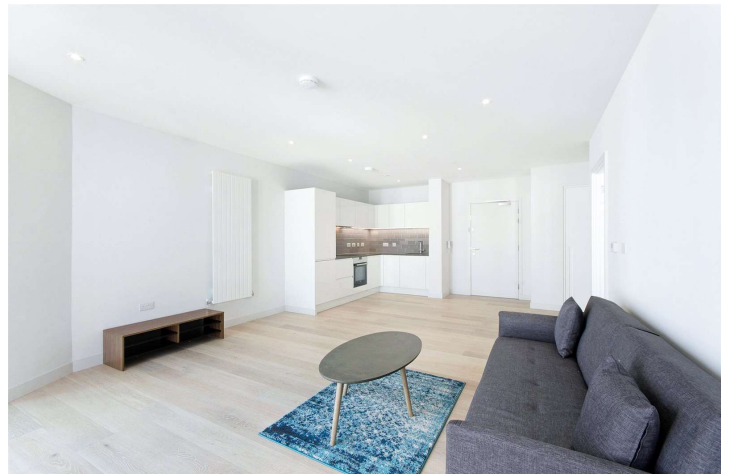
{Canning Town}:		{5}min
{Stratford International}:		{20}min

TERMS

Local Authority: Newham
Furnishings: Furnished

PROPERTY FLOOR PLANS

Approximate gross internal area = 0.0 sq m / 0 sq ft



Energy Efficiency Rating		
	Current	Potential
Very energy efficient - lower running costs		
(92+) A		
(81-91) B	82	82
(69-80) C		
(55-68) D		
(39-54) E		
(21-38) F		
(1-20) G		
Not energy efficient - higher running costs		
England, Scotland & Wales	EU Directive 2002/91/EC	



ESTEBAN MARMOLEJO

t:

e: esteban@dockleys.com

In accordance with The Consumer Protection from Unfair Trading Regulations 2008 the following particulars are intended as a guide and act as information only. All details and approximate measurements are given in good faith and are believed to be correct at the time of printing. Dockleys always looks at the potential for each property so all references to planning permission should be discussed directly with the local authority.