



8 Woodpecker Place, Bracknell, Berkshire, RG12 8BH

Offers In Excess Of £200,000 Freehold

The Property

This one bedroom Coach House is located on the popular Jennett's Park development at the end of a cul-de-sac. The accommodation comprises of an open-plan living space, double bedroom and four piece bathroom suite. Other features include gas radiator heating and double glazed windows. Outside there is a carport with outside lockable storage and communal grounds to the front.

- One Bedroom Coach House
- Freehold
- Open-Plan Living Area
- Modern Kitchen With Built In Appliances
- Four Piece Bathroom Suite
- Double Bedroom
- Gas Radiator Heating
- Carport
- Cul-De-Sac



Motorway Links

M3 Junction: 7.3 Miles
M4 Junction: 3.5 Miles



Train Links

Bracknell Station: 2.4 Miles
Martins Heron Station: 4.4 Miles

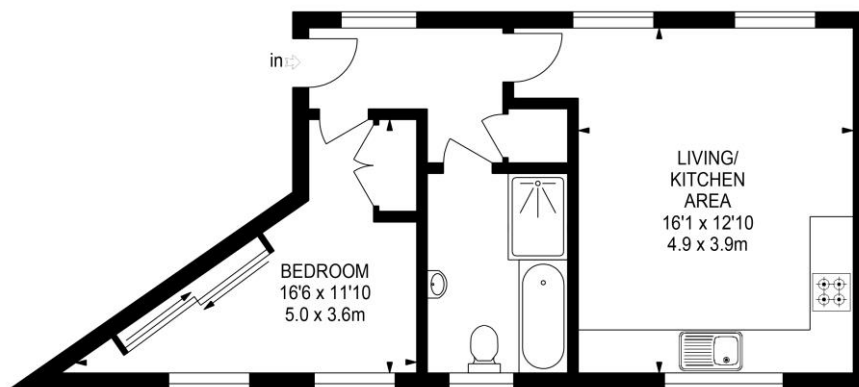


Nearest Schools:

Jennett's Park 0.2 Miles
Great Hollands 1.0 Miles
Easthampstead Park 0.7 Miles

8 Woodpecker Place, Bracknell, RG12 8BH

duncan
yearley



APPROX. GROSS INTERNAL FLOOR AREA 450 SQ FT /41.80 SQ M

This plan is for layout guidance only. Not drawn to scale unless stated. Windows & door openings are approximate. Whilst every care is taken in the preparation of this plan, please check all dimensions, shapes & compass bearings before making any decisions reliant upon them.

01344 860 121 • sales@duncanyearley.co.uk

9 Crown Row, Bracknell, RG12 0TH • duncanyearley.co.uk

These particulars have been produced with the approval of our client, but all measurements should be taken as approximate and we do not recommend using them as a guide for floor coverings. Purchasers must satisfy themselves as to the condition of the property/outbuildings and to the condition and serviceability of any fixtures and fittings, including the central heating system and boiler etc. NB: Please note that we have not checked whether the property, or any part of it, complies with the planning acts or building regulations. This should be checked by your surveyor or solicitor.

duncan
yearley



sales • lettings & management