



## 55 Hythe Close, Bracknell, Berkshire, RG12 0UZ

Offers In Excess Of £325,000 Freehold

### The Property

This two bedroom, end of terrace home is set in a stunning location, overlooking a copse at the end of a cul-de-sac in Forest Park. The property offers a modern open-plan living space, comprising of living, kitchen and conservatory areas. On the first floor are two double bedrooms and a re-fitted bathroom. Other features include a good sized corner plot and driveway parking leading to garage.

- End Of Terrace House
- Double Bedrooms
- Living Area
- Modern Kitchen & Bathroom
- Conservatory
- Gas Radiator Heating
- Double Glazed Windows
- Corner Plot
- Garage & Parking
- Popular Forest Park Location



#### Motorway Links

M3 Junction: 4.9 Miles  
M4 Junction: 7.0 Miles



#### Train Links

Bracknell Station: 2.5 Miles  
Martins Heron Station: 0.5 Miles



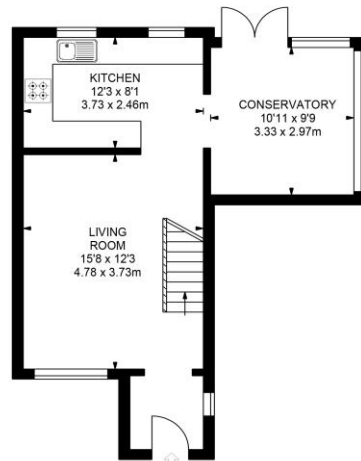
#### Nearest Schools:

Harmans Water 0.5 Miles  
Crown Wood 0.7 Miles  
Brakenhale 1.4 Miles  
Ranelagh 1.4 Miles

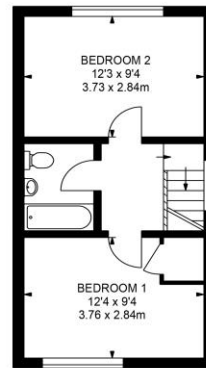


# 55 Hythe Close, Bracknell, RG12 0UZ

duncan  
yearley



GROUND FLOOR



FIRST FLOOR



APPROX. GROSS INTERNAL FLOOR AREA 758 SQ FT / 70.42 SQ M

This plan is for layout guidance only. Not drawn to scale unless stated. Windows & door openings are approximate. Whilst every care is taken in the preparation of this plan, please check all dimensions, shapes & compass bearings before making any decisions reliant upon them.  
Estate Services © 2020 www.estateservicespcs.co.uk

01344 860 121 • [sales@duncanyearley.co.uk](mailto:sales@duncanyearley.co.uk)

9 Crown Row, Bracknell, RG12 0TH • [duncanyearley.co.uk](http://duncanyearley.co.uk)

These particulars have been produced with the approval of our client, but all measurements should be taken as approximate and we do not recommend using them as a guide for floor coverings. Purchasers must satisfy themselves as to the condition of the property/outbuildings and to the condition and serviceability of any fixtures and fittings, including the central heating system and boiler etc. NB: Please note that we have not checked whether the property, or any part of it, complies with the planning acts or building regulations. This should be checked by your surveyor or solicitor.



sales • lettings & management

duncan  
yearley