



**Rokeby Apartments, Eastman Village, Harrow,
HA1**

Guide Price: £428,000

Leasehold

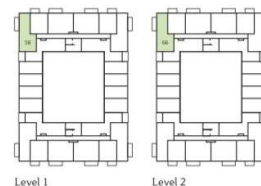
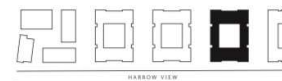
Rokeby Apartments, Eastman Village, Harrow, HA1

A 2-bedroom apartment on the 1st floor featuring an open plan living/dining and kitchen area that opens out onto a private balcony. There is plenty of storage and underfloor heating throughout.

Eastman Village is being built on the site of the former Kodak factory in Wealdstone, Harrow. The development will eventually comprise over 1000 new homes set amongst plenty of landscaped, green open spaces. You'll also be conveniently located a short walk from the amenities of Wealdstone High Street, which include shops, restaurants, cafes and banks.

- Leasehold
- Ready to move in Q4 2019
- Total Area - 781 Sq. Ft.
- Individually designed handleless German kitchens
- Underfloor heating throughout
- Fibre broadband connectivity
- Available With London Help To Buy

Rokeby Apartments
2 bedroom
apartment



PLOT 58 (1), 66 (2)
Living/Kitchen/Dining 23'4" x 12'10" (7100 x 3911mm)
Bedroom 1 13'11" x 9'4" (4241 x 2841mm)
En suite 6'7" x 5'1" (2000 x 1550mm)
Bedroom 2 12'4" x 9'4" (3770 x 2851mm)
Bathroom 7'3" x 6'7" (2200 x 2000mm)
TOTAL AREA 781.9 sq ft (72.6 sq m)
Balcony 16'8" x 4'11" (5073 x 1500mm)





Grey & Co - Grey and Co - Wembley Park

7 Grand Parade
HA9 9JS

T: 0208 904 1235
E: jesal@greyandco.net
www.greyandco.net

Grey and Co Ltd. Registered in England and Wales - 3341495
Registered Office: 7 Grand Parade, Wembley Park, Middlesex, HA9 9JS.

Disclaimer

Every attempt has been made to ensure accuracy, however these property particulars are approximate and for illustrative purposes only. They have been prepared in good faith and they are not intended to constitute part of an offer of contract. We have not carried out a structural survey and the services, appliances and specific fittings have not been tested. All photographs, measurements, floor plans and distances referred to are given as a guide only and should not be relied upon for the purchase of any fixture or fittings. Lease details, service charges and ground rent (where applicable) are given as a guide only and should be checked prior to agreeing a sale.