



*Onslow Gardens*

South Kensington - SW7

HardingGreen

## Description

A beautifully presented two bedroom apartment (Approx 29 years lease) with its own south facing private terrace overlooking Ensor Mews. The property is situated on the third floor of this attractive period building located in the heart of South Kensington and comprises a large reception room facing the gated communal gardens, two bedrooms to the rear one with access out to its own roof terrace and an excellent fully fitted granite kitchen. The property also benefits from an access to the beautifully maintained communal garden square. The property is currently let at £2,383 per month through Harding Green.

**Service Charge:** £4,308.50PA

**Current Sinking Fund:** £4,900.00PA

Private Roof Terrace

Communal Gardens


Highly Sought After Location

Spacious and Bright Reception Room

## Onslow Gardens

South Kensington - SW7

Guide Price £695,000

Energy Efficiency Rating		Current	Potential
Very energy efficient - lower running costs			
(92+)	<b>A</b>		
(81-91)	<b>B</b>		
(69-80)	<b>C</b>		
(55-68)	<b>D</b>	70	77
(39-54)	<b>E</b>		
(21-38)	<b>F</b>		
(1-20)	<b>G</b>		
Not energy efficient - higher running costs			
England, Scotland & Wales	EU Directive 2002/91/EC		





---

## Situation

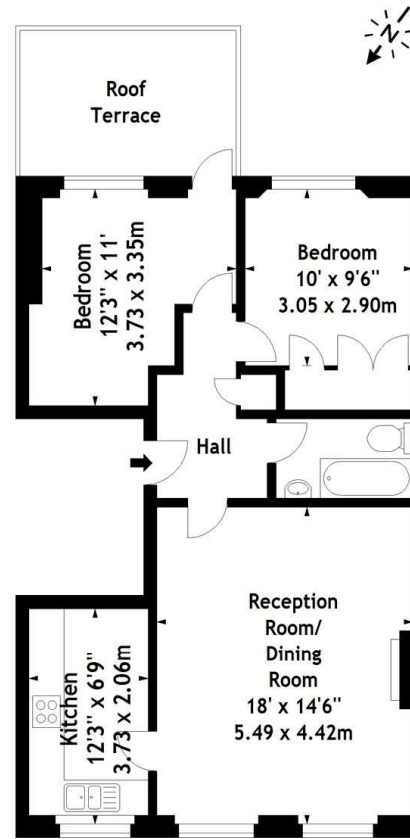
---

Located on the prestigious Onslow Gardens which runs south from Old Brompton Road this flat is perfectly located for both the shops and restaurants of South Kensington and the underground station (Piccadilly, District & Circle Lines).

IMPORTANT: we would like to inform prospective purchasers that these sales particulars have been prepared as a general guide only. A detailed survey has not been carried out, nor the services, appliances and fittings tested. Room sizes should not be relied upon for furnishing purposes and are approximate. If floor plans are included, they are for guidance only and illustration purposes only and may not be to scale. If there are any important matters likely to affect your decision to buy, please contact us before viewing the property.



Onslow Gardens, SW7  
Approx. Gross Internal Area  
685 Sq Ft - 63.64 Sq M



Third Floor

Measured in accordance with RICS guidelines. Every attempt is made to ensure accuracy, however all measurements are approximate. This floor plan is for illustrative purposes only and is not to scale.  
© Datography Ltd 2014  
Photographs \* Floorplans \* Virtual Tours  
Tel: 0845 643 4401 www.datography.com

16 Kensington Court Place, London, W8 5BJ

t – 0203 375 1970

e – info@hardinggreen.com

# HardingGreen

HARDINGGREEN.COM