

T: 01519331075

E: sales@revivesl.co.uk

Selwyn Street, Liverpool, L4

Guide Price: £60,000 + fees



- Freehold
- Mid Terrace
- 1st Floor Bathroom
- Two Bedrooms
- EPC Rating - D

2 Bed Mid terrace property benefitting from double glazing and central heating. Tenant in situ

FOR SALE BY CONDITIONAL ONLINE AUCTION.

Revive Property Sales & Lettings are pleased to bring to market this investment opportunity.

Description

A 2 bed mid terrace property benefitting from double glazing and central heating.

Situated

Off the A5038 and in a popular residential location within close proximity to local amenities, schooling, Kirkdale Train Station, Everton Football Club and approximately 4 miles from Liverpool City Centre.

Ground Floor

Lounge/Dining Room, Kitchen

First Floor

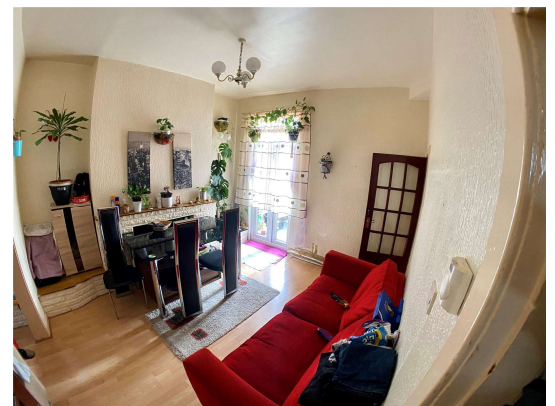
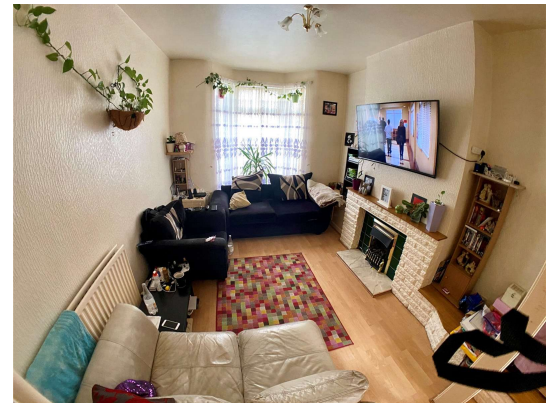
2 Bedrooms, Bathroom/WC

Outside

Yard To Rear.

Click on the link below to place your bid!

<https://online.sdlauctions.co.uk/lot/details/40459?agent=290>



Disclaimer

Every attempt has been made to ensure accuracy, however these property particulars are approximate and for illustrative purposes only. They have been prepared in good faith and they are not intended to constitute part of an offer of contract. We have not carried out a structural survey and the services, appliances and specific fittings have not been tested. All photographs, measurements, floor plans and distances referred to are given as a guide only and should not be relied upon for the purchase of any fixture or fittings. Lease details, service charges and ground rent (where applicable) are given as a guide only and should be checked prior to agreeing a sale.

Revive Property Sales and Lettings Limited Company Number 12457348
Registered Office: 3 County Road, Walton, Liverpool, L4 3QA

Energy Efficiency Rating		Current	Potential
Very energy efficient - lower running costs			
(92-)	A		
(81-91)	B		87
(69-80)	C		
(56-68)	D	65	
(39-54)	E		
(21-38)	F		
(1-20)	G		
Not energy efficient - higher running costs			
England, Scotland & Wales		EU Directive 2002/91/EC	